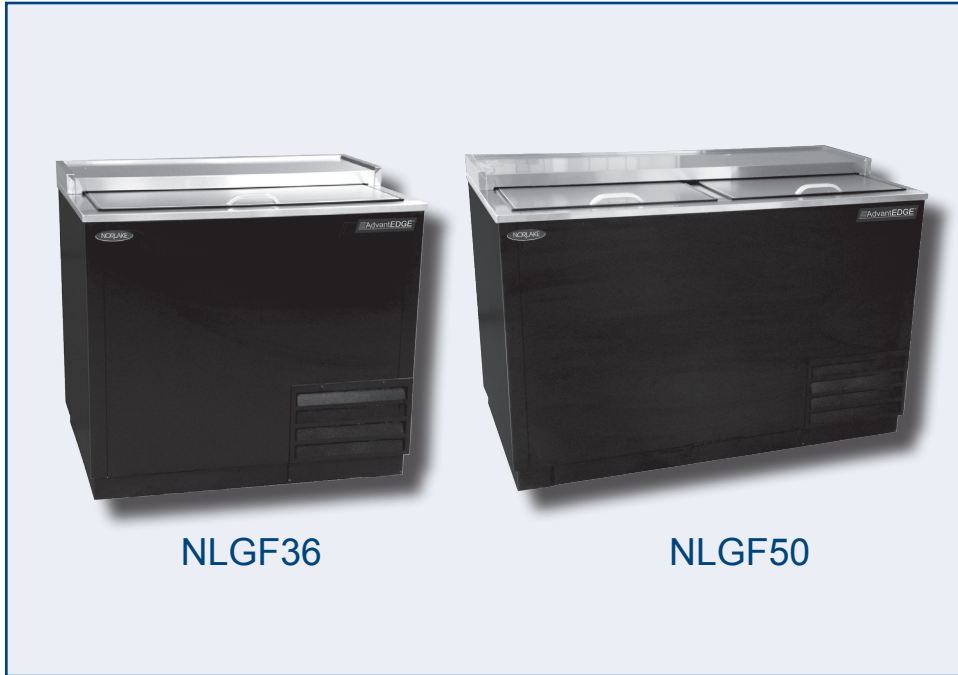


NOR-LAKE, INCORPORATED
 727 Second Street
 P.O. Box 248
 Hudson, Wisconsin 54016

800-955-5253
 715-386-2323
 866-961-5253 Parts
 800-388-5253 Service
 715-386-4291 FAX
 www.norlake.com



ADVANTEDGE™ GLASS FROSTERS



NLGF36

NLGF50

PROJECT:

ITEM NUMBER:

MODEL NUMBER:

GLASS FROSTERS

SPECIFICATIONS FOR: NLGF36 & NLGF50

- **Finish:** Black painted steel cabinet exterior front, sides and back with stainless steel top and sliding covers. Interior galvanized walls and stainless steel floor.
- **Insulation:** Foamed-in-place with 2" CFC free polyurethane insulation.
- **Electrical:** 115 volt, 60 Hz, 1 phase with cord and NEMA 5-15P plug.
- **Hardware:** Standard with integrated glass rail on rear top, easy glide sliding lids. Slide by shelving for easy access to lower levels. Plastic breaker strips around door openings to limit the formation of any condensation.
- **Refrigeration:** Self-contained forced air capillary tube refrigeration system; R-134a on NLGF36, R-404a on NLGF50. Automatic defrost and condensate evaporator requires no plumbing. Operating temperature: 0°F (-17°C).
- **Approvals:** UL/C-UL Safety and ETL Sanitation listed **

STANDARD FEATURES

- Air cooled condensing unit
- Automatic defrost and condensate evaporator
- Black painted steel exterior
- Capillary tube system
- Durable galvanized stainless steel interior
- Multiple evaporator fan motors
- Stainless steel top with integrated glass rail
- Stainless steel sliding lids
- Temperature: 0°F (-17°C)
- Approvals: UL/C-UL Safety, ETL Sanitation **
- Warranties: 3 year parts & labor, 5 year compressor

OPTIONAL FEATURES *

- 4" casters

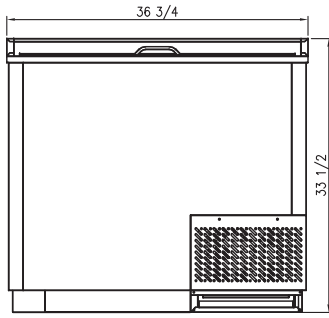


Nor-Lake, Inc.
 Registered to ISO 9001:2008
 File No. 10001816

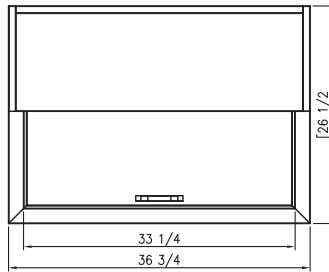
* Most options are available one week from receipt of order. Please contact us for specific questions.

** C-UL is Underwriters Laboratories Safety Certification Mark which indicates that UL has tested the equipment to applicable CSA Standards.

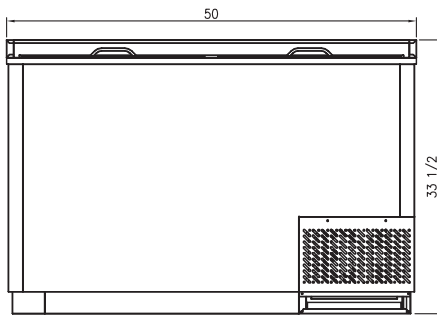
** ETL-Sanitation is Intertek Sanitation Certification Mark which indicates that UL has tested the equipment to applicable NSF Standards.



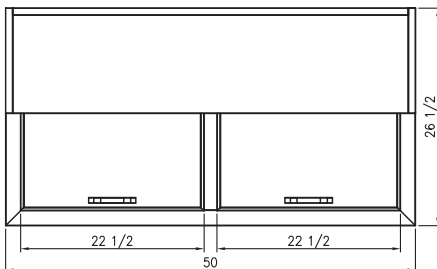
**FRONT VIEW
NLGF36**



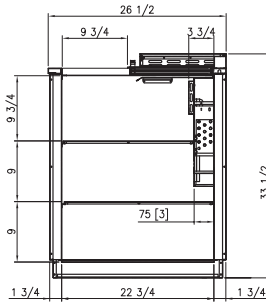
**TOP VIEW
NLGF36**



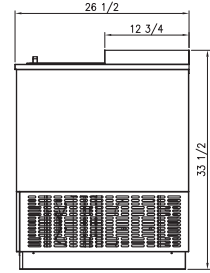
**FRONT VIEW
NLGF50**



**TOP VIEW
NLGF50**



INTERIOR SIDE VIEW



SIDE VIEW

SPECIFICATIONS

Models	NLGF36	NLGF50
<i>Crated Weight (lbs) (kg)</i>	189 (85)	233 (105)
<i>Crated Height (in) (cm)</i>	41 (104)	41 (104)
<i>Crated Width (in) (cm)</i>	39-1/2 (100)	52-2/3 (134)
<i>Crated Depth (in) (cm)</i>	29 (74)	29 (74)
<i>Interior Height (in) (cm)</i>	28 (71)	28 (71)
<i>Interior Width (in) (cm)</i>	32-3/4 (83)	46 (117)
<i>Interior Depth (in) (cm)</i>	22-3/4 (58)	22-3/4 (58)
<i>Overall Height (in) (cm)</i>	33-1/2 (85)	33-1/2 (85)
<i>Overall Width (in) (cm)</i>	36-3/4 (93)	50 (127)
<i>Overall Depth (in) (cm)</i>	26-1/2 (67)	26-1/2 (67)
<i>Gross Cubage (CuFt) (L)</i>	8 (226)	15 (425)
<i>Number of Shelves</i>	4	5
<i>Shelf Area (SqFt) (Sqm)</i>	40 (27.3)	56.2 (46.7)
<i>Number of Doors</i>	1	2
<i>Condensing Unit Size</i>	3/8 HP	1/2 HP
<i>Refrigerant</i>	R-134a	R-404a
<i>Electrical Characteristics</i>	115/60/1	115/60/1
<i>Cord and Plug Furnished</i>	Yes	Yes
<i>NEMA Plug Configuration</i>	5-15P	5-15P
<i>Total Amp Draw</i>	5.3	7.9
<i>Capacity 10 oz. Beer Stein</i>	150	226
<i>Capacity 8" Glass</i>	132	206

Specifications subject to change without notice.



NORLAKE[®]

Revision Date: 07/14
© 2014 NOR-LAKE, INC.
Printed in the U.S.A.
Part Number: 156045